

# 87 MUTUAL STREET, TORONTO

PRIME RETAIL FOR SALE AND LEASE



**680 SQUARE FEET**

Located south of Dundas St. E. and  
west of Jarvis St.

## INQUIRIES

**Rob Eklove**

Vice President, Urban Retail  
Sales Representative  
416 636 8898 x224  
reklove@thebehargroup.com



**THE BEHAR GROUP**  
LANDLORD SERVICES

# 87 MUTUAL STREET, TORONTO

PRIME RETAIL FOR SALE AND LEASE



## PROPERTY DETAILS

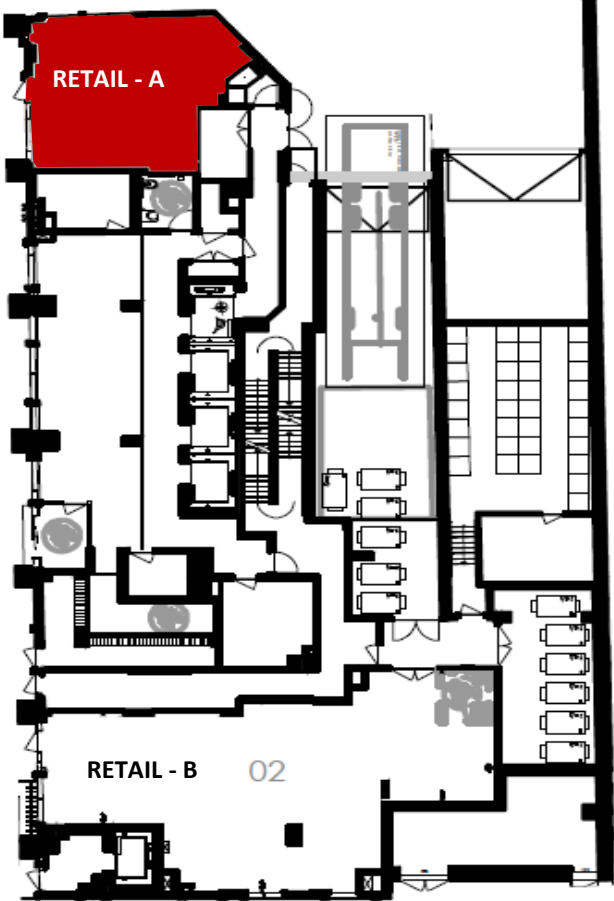
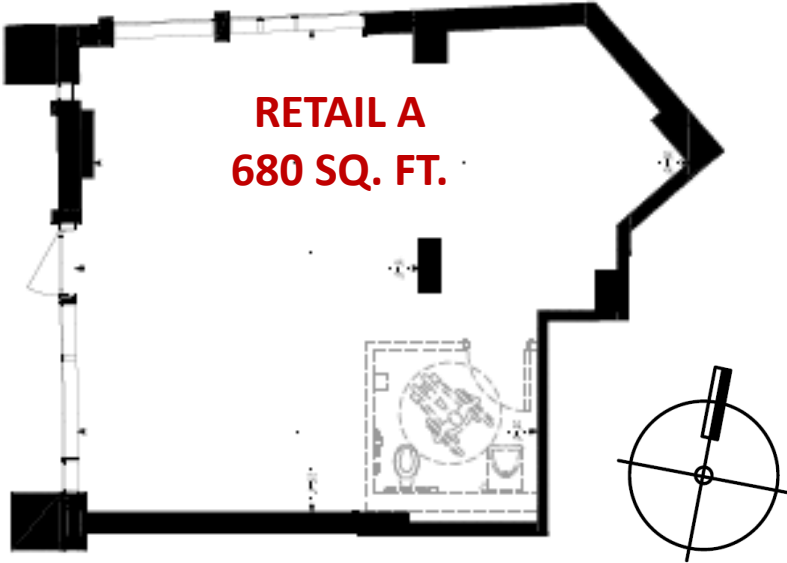
- Located just steps from the corner of Church St. and Dundas St. E. in the heart of downtown's most central neighbourhood
- Multi-storey, mixed use development
- Close to Ryerson University
- Steps to TTC streetcar
- Ideally suited for all commercial, retail, office, food and service uses (no cannabis)
- **Occupancy:** Immediate
- **Size:** Retail A - Northwest Corner - 680 square feet
- **Sale Price:**
  - ◇ Retail A - \$800,000
- **Net Rent**
  - ◇ Retail A - \$65.00 per square feet
- **TMI:** \$20.00 per square foot (estimate)

**MAX**  
CONDOS

 **THE BEHAR GROUP**  
LANDLORD SERVICES

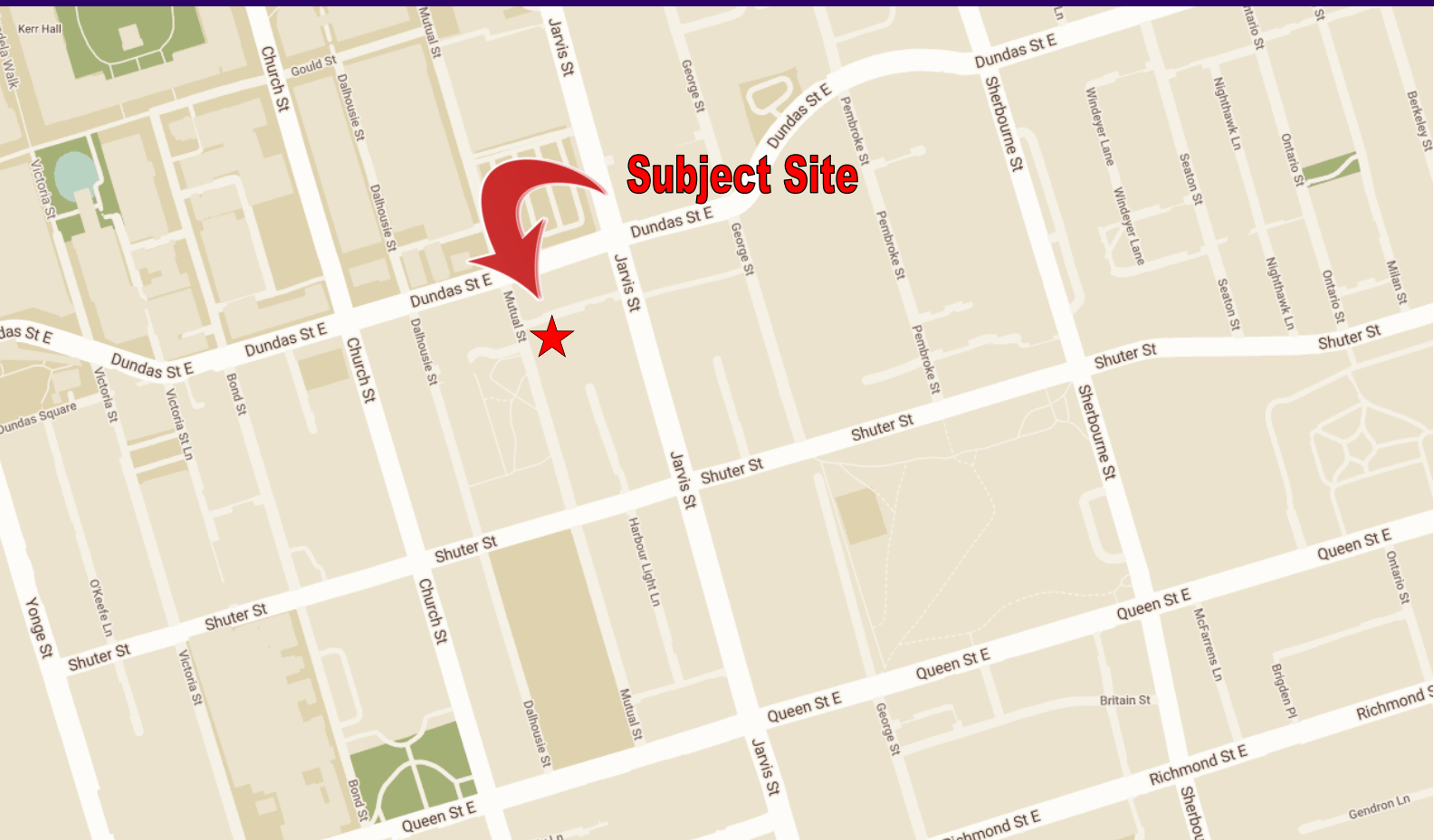
# 87 MUTUAL STREET, TORONTO

PRIME RETAIL FOR SALE AND LEASE



# 87 MUTUAL STREET, TORONTO

PRIME RETAIL FOR SALE AND LEASE



Demographics - 2016	.5 km	1 km	2 km
Total Population	12,392	56,185	173,518
Daytime Population	35,139	226,295	641,110
Total Households	6,689	32,126	99,492
Household Average Income	\$63,224	\$78,196	\$85,647

Source: Statistics Canada

All information is from sources deemed reliable and is subject to errors and omissions which we believe to be correct and assume no responsibility. Changes of price, rental, prior sale and withdrawal without notice. People are not to construe this information as legal or tax advice. You should consult your legal counsel, accountant, or other advisors on matters relating to this presentation. The Behar Group Realty Inc., Brokerage.

