

Retail Property

FOR LEASE

333 ONTARIO STREET, ST. CATHARINES



Prominent Tenants in the Centre



Large Retail Unit (7,771 SF) For Lease

In 11 Acres (162,000 SF) Retail Centre

Rent: \$12.00 PSF / TMI: \$5.50 PSF

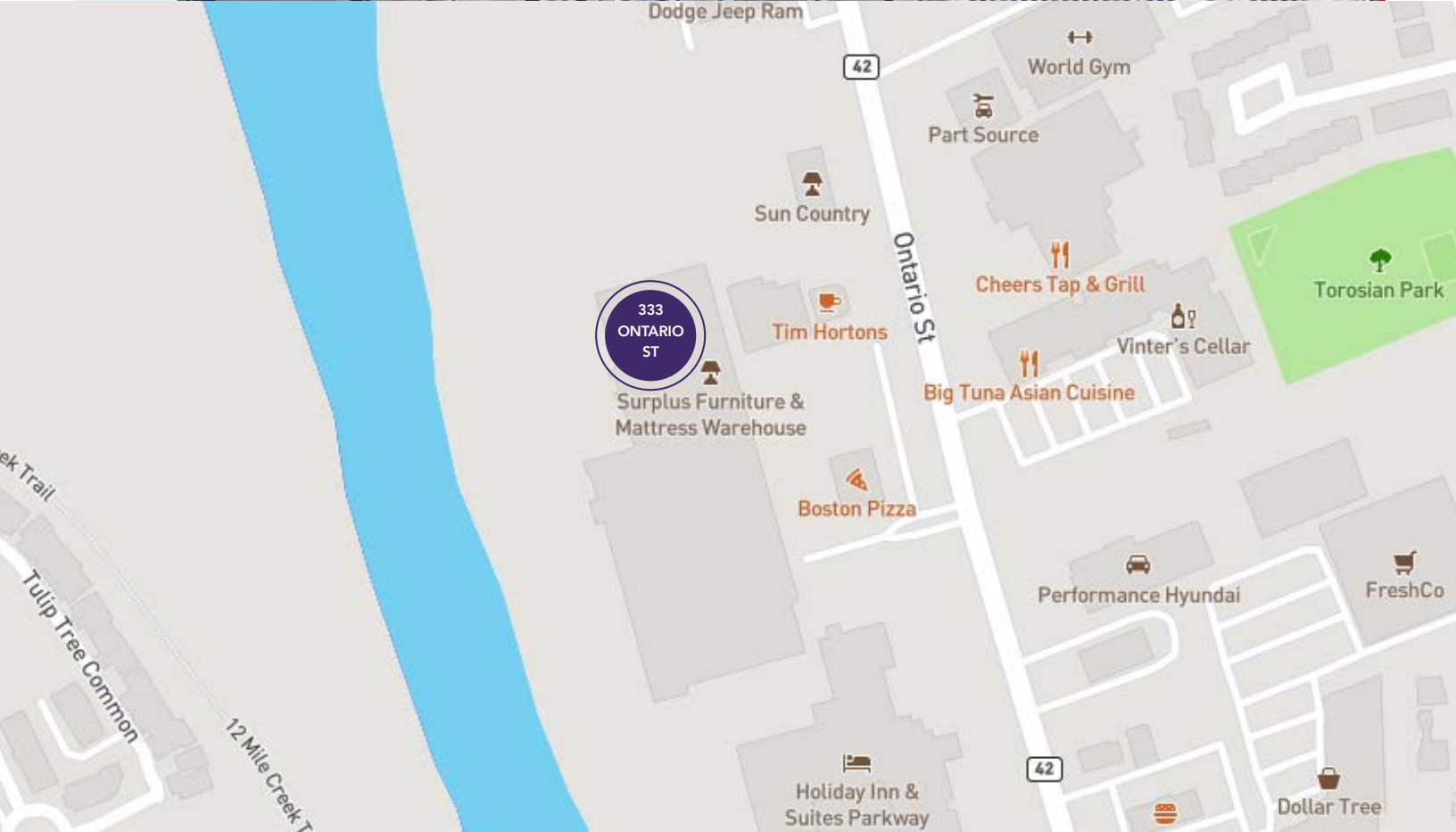
PROPERTY DESCRIPTION

- In busy Retail Hub.
- Close to QEW.
- Prominent Tenants in the Centre include: Tim Hortons, Boston Pizza, Skyzone, Booster Juice, Holiday Inn & Suites



The Behar Group Realty Inc., Brokerage
1170 Sheppard Avenue West, Unit 24, Toronto, ON M3K 2A3
Tel: 416.636.8898 / Fax: 416.636.8890
www.thebehargroup.com

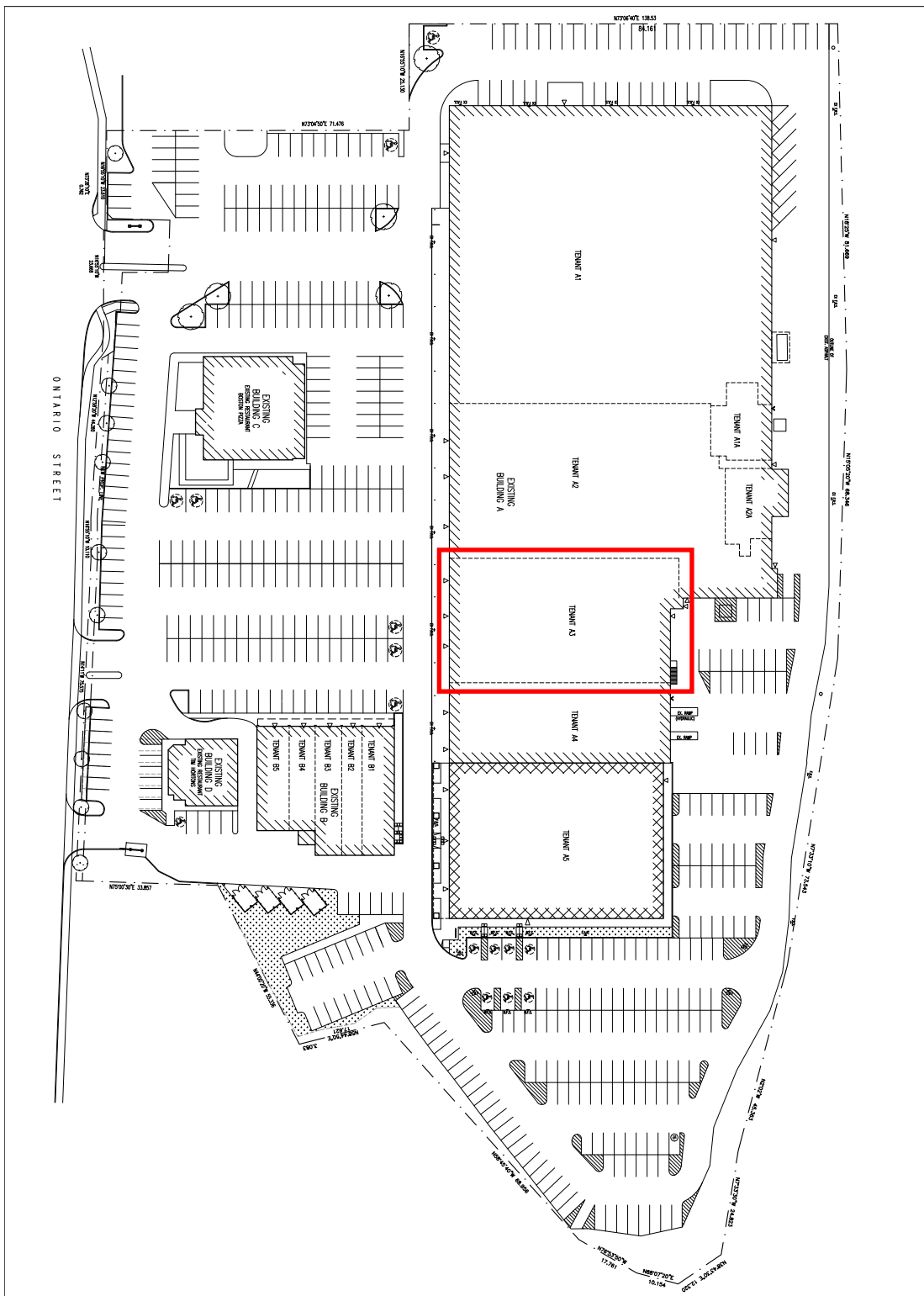
All information is from sources deemed reliable and is subject to errors and omissions which we believe to be correct and assume no responsibility. Changes of price, rental, prior sale and withdrawal without notice. None of the information contained herein is to be construed as legal or tax advice. You should consult your legal counsel, accountant, or other advisors on matters relating to this presentation.



Jeanine McLaughlin
 Broker
 416 636 8898 EXT. 238
jmclaughlin@thebehargroup.com



Janis MacDougall
 Sales Representative
 416 636 8898 EXT. 257
jmacdougall@thebehargroup.com



Job Number: 15-01
 Drawing Number: **A1**

Project Name:
NEW BUILDING
 333 ONTARIO STREET
 ST. CATHARINES, ONTARIO

Drawing Title:
 SITE PLAN

Drawn by:
 TD

Design by:
 LJM

Checked by:
 MFM

Date:
 2015-12-15

2M architects inc.
 115 Lake Street
 St. Catharines, ON
 Canada L2R 5K7
 Tel: 905-687-9777
 Fax: 905-687-9997
 2MArchitects@coogeo.net
 www.2marchitects.ca

NO	DATE	REVISION



THESE DOCUMENTS ARE NOT TO BE SCALED.
 CONTRACTOR TO VERIFY ALL DETAILS AND DIMENSIONS AND
 CONDITIONS AND ALL REQUIREMENTS TO BE PROVIDED BEFORE
 COMMENCING WITH THE RELATED PORTION OF THE WORK.
 ONLY PRINTED, SEALD AND STAMPED DOCUMENTS ARE TO BE USED
 FOR CONSTRUCTION PURPOSES.



Jeanine McLaughlin
 Broker
 416 636 8898 EXT. 238
 jmclaughlin@thebehargroup.com



Janis MacDougall
 Sales Representative
 416 636 8898 EXT. 257
 jmacdougall@thebehargroup.com