

Commercial - Retail

FOR LEASE

18185 YONGE STREET, UNIT #1, EAST GWILLIMBURY



THE BEHAR GROUP
LANDLORD SERVICES



SIZE:
1800 SQ.FT.

**RESTAURANT
RETROFIT**

(can be converted to
another restaurant use)

Located on the south east side of Yonge Street and Green Lane.

Property anchored by Famous Players, Best Buy, The Keg, Swiss Chalet, Service Canada, Daycare and more.

Abundant surface parking.

Suggested Uses: Restaurant, Medical, Office, Service Uses.
(suitable for a variety of uses)



Barbara Kless,
Sales Representative,
Vice President of Retail Leasing
416 636 8898 EXT. 240
bkless@thebehargroup.com



Kelly Farraj,
Sales Representative,
Vice President
416 636 8898 EXT. 249
kfarraj@thebehargroup.com

2020 DEMOGRAPHICS

	1 km	3 km	5 km
Total Population	5,861	38,687	85,344
Total Daytime Population	4,331	39,197	86,458
Total Households	1,802	13,677	30,070
Household Average Income	\$138,677	\$119,038	\$125,453

Traffic Count- Yonge St. & Aspenwood Dr. S. - **35,094** (2018 Count)

Source: Neustar, 2020

NET RENT

\$35.00/sq.ft.

TMI

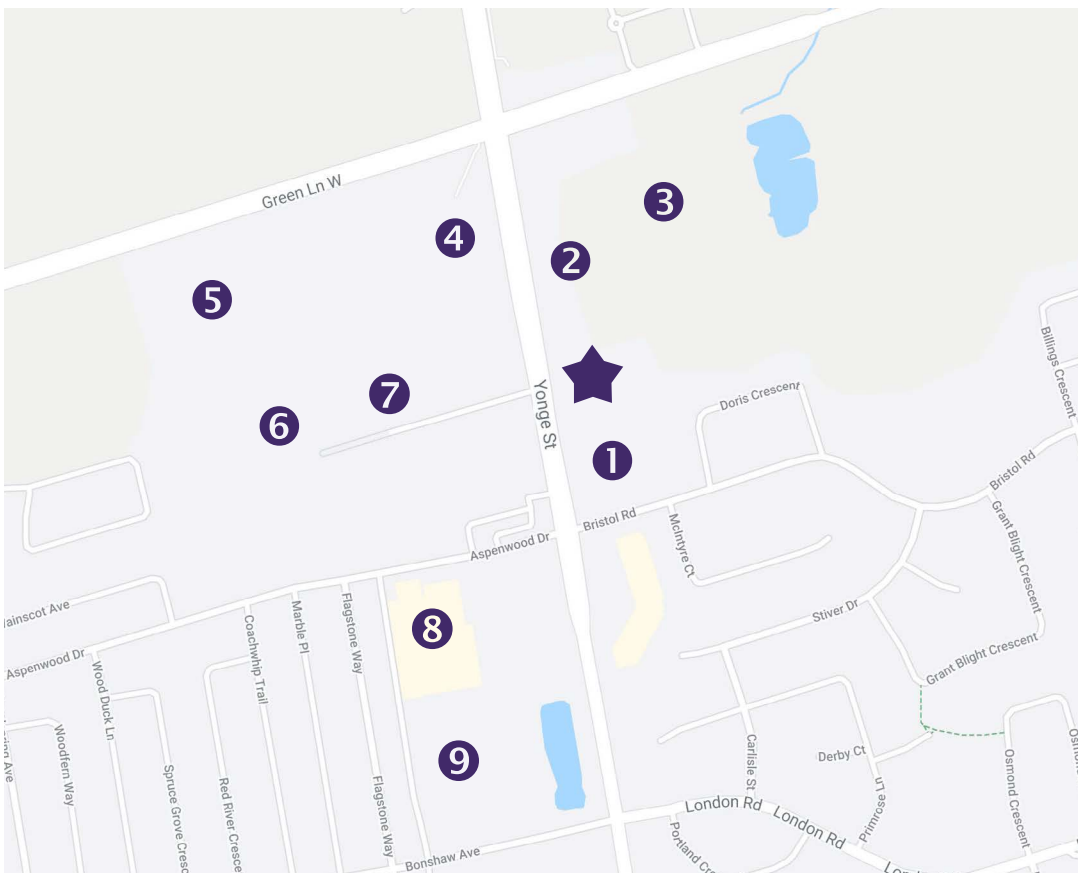
\$13.75/sq.ft.

SIZE

1800 sq.ft.

AVAILABILITY

Immediate

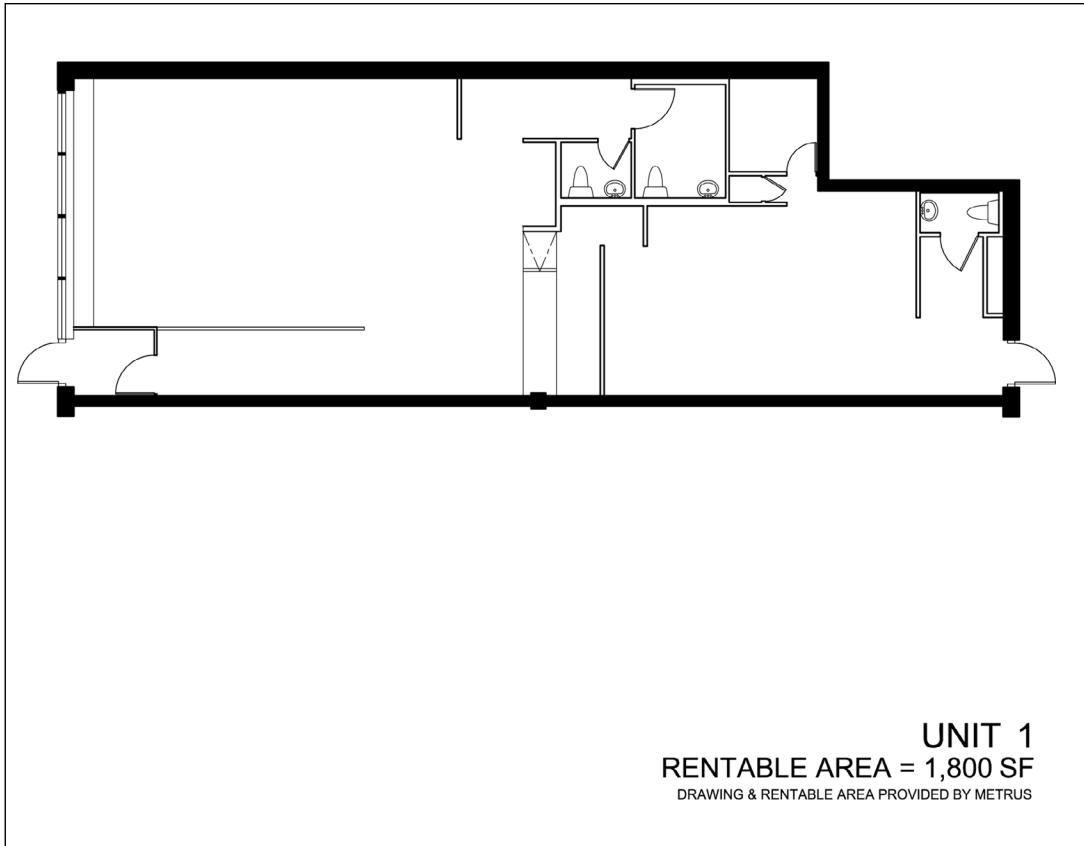


- ★ 18185 Yonge Street
- ① Farm Boy
- ② Boston Pizza
- ③ Silver City
- ④ TD Canada
- ⑤ Costco
- ⑥ Bed Bath & Beyond
- ⑦ Real Canadian Superstore
- ⑧ Walmart
- ⑨ The Brick



THE BEHAR GROUP
LANDLORD SERVICES

The Behar Group Realty Inc., Brokerage
1170 Sheppard Avenue West, Unit 24, Toronto, ON M3K 2A3
Tel: 416.636.8898 / Fax: 416.636.8890
www.thebehargroup.com



All information is from sources deemed reliable and is subject to errors and omissions which we believe to be correct and assume no responsibility. Changes of price, rental, prior sale and withdrawal without notice. None of the information contained herein is to be construed as legal or tax advice. You should consult your legal counsel, accountant, or other advisors on matters relating to this presentation.



THE BEHAR GROUP
LANDLORD SERVICES

The Behar Group Realty Inc., Brokerage
1170 Sheppard Avenue West, Unit 24, Toronto, ON M3K 2A3
Tel: 416.636.8898 / Fax: 416.636.8890
www.thebehargroup.com