

Industrial/Commercial/Office Condominium **FOR SALE**

95 ROYAL CREST COURT, UNITS 13 & 14, MARKHAM



UNIT SIZE: **2,794 SQ.FT.**

PRICE: **\$1,200,880**

MONTHLY CONDO FEE: **\$848.64**

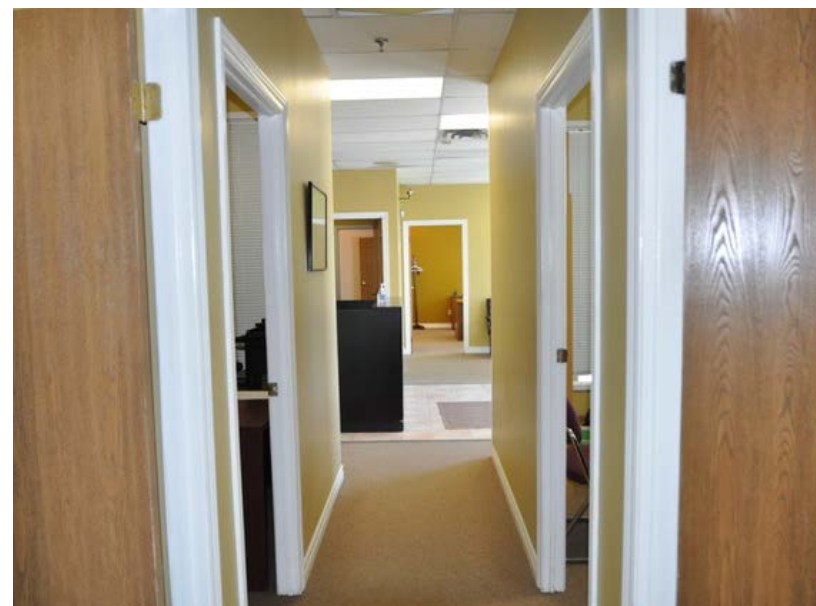
ANNUAL REALTY TAX: **\$7,740.24**



Ron Fehler, Sales Representative
Vice President

416 636 8898 EXT. 235

rfehler@thebehargroup.com



UNIT DETAILS

- **Shipping:** 2 Drive in doors
- **Clear Height:** 16 feet
- **Office Space:** Bright welcoming reception area, 7 private offices, boardroom, kitchenette, plus 2 washrooms
- **Warehouse Space:** Approx. 1,000 square feet plus approx. 200 square feet mezzanine
- **Power:** 600v - 60amps (to be confirmed)
- **Parking:** Abundant Non-Exclusive Available
- **Ideal Uses:** Warehouse and Distribution Centre, Business Office with Storage Space, Repair Shops



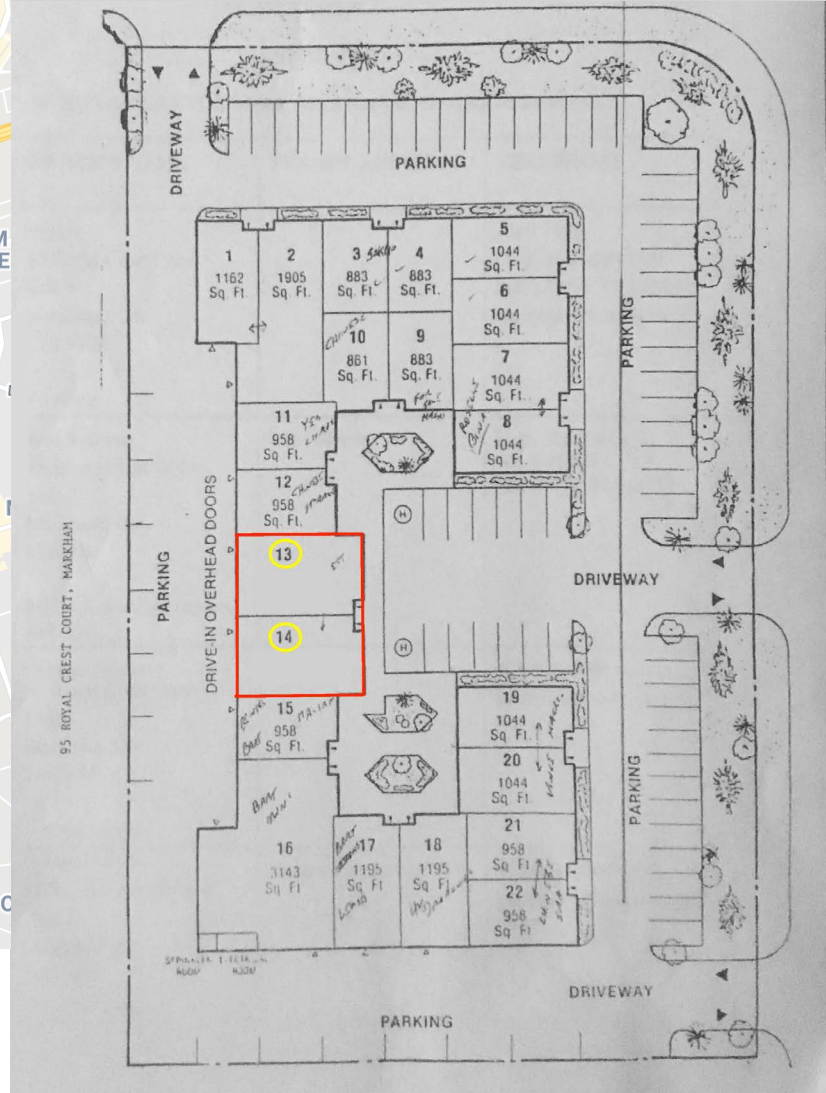
THE BEHAR GROUP
CAPITAL MARKETS

The Behar Group Realty Inc., Brokerage
1170 Sheppard Avenue West, Unit 24, Toronto, ON M3K 2A3
Tel: 416.636.8898 / Fax: 416.636.8890
www.thebehargroup.com

MAP & SITE PLAN



**95 Royal Crest Court, Markham
Units 13&14
SITE PLAN**



All information is from sources deemed reliable and is subject to errors and omissions which we believe to be correct and assume no responsibility. Changes of price, rental, prior sale and withdrawal without notice. None of the information contained herein is to be construed as legal or tax advice. You should consult your legal counsel, accountant, or other advisors on matters relating to this presentation.



The Behar Group Realty Inc., Brokerage
 1170 Sheppard Avenue West, Unit 24, Toronto, ON M3K 2A3
 Tel: 416.636.8898 / Fax: 416.636.8890
www.thebehargroup.com