

81 & 87 MUTUAL STREET, TORONTO

PRIME RETAIL FOR LEASE



680 & 1,643 SQUARE FEET

Located south of Dundas St. E. and
west of Jarvis St.

INQUIRIES

Rob Eklove

Vice President, Urban Retail
Sales Representative
416 636 8898 x224
reklove@thebehargroup.com



THE BEHAR GROUP
LANDLORD SERVICES

81 & 87 MUTUAL STREET, TORONTO

PRIME RETAIL FOR LEASE



PROPERTY DETAILS

- Located just steps from the corner of Church St. and Dundas St. E. in the heart of downtown's most central neighbourhood
- Multi-storey, mixed use development
- Close to Ryerson University
- Steps to TTC streetcar
- Ideally suited for all commercial, retail, office, food and service uses (no cannabis)
- **Occupancy:** November 2020
- **Size:** Retail A (87 Mutual St.) - 1,643 square feet
Retail B (81 Mutual St.) - 680 square feet
- **Net Rent**
 - ◇ Retail A (87 Mutual St.) - \$65.00 per square feet
 - ◇ Retail B (81 Mutual St..) - \$55.00 per square foot
- **TMI:** \$20.00 per square foot (estimate)

MAX
CONDOS

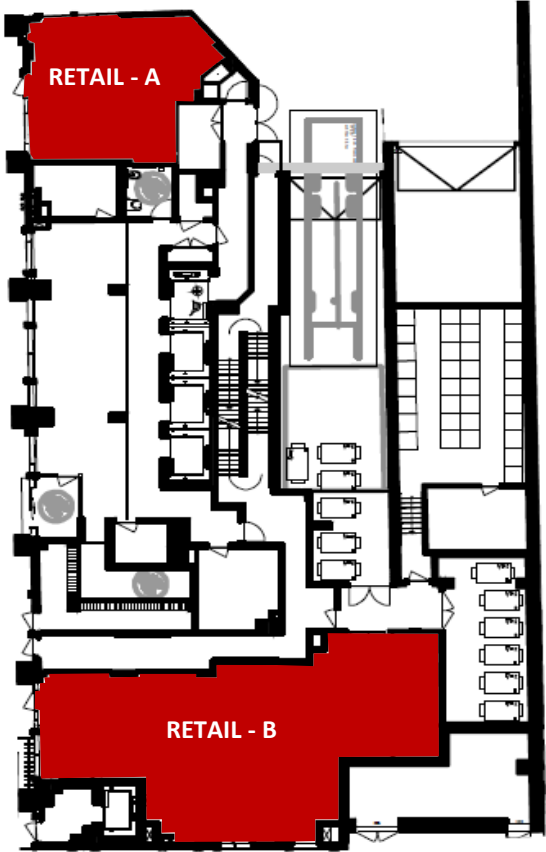
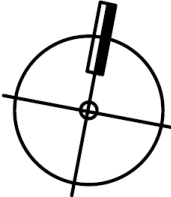
 **THE BEHAR GROUP**
LANDLORD SERVICES

81 & 87 MUTUAL STREET, TORONTO

PRIME RETAIL FOR LEASE



RETAIL A
680 SQ. FT.



RETAIL - A

RETAIL - B

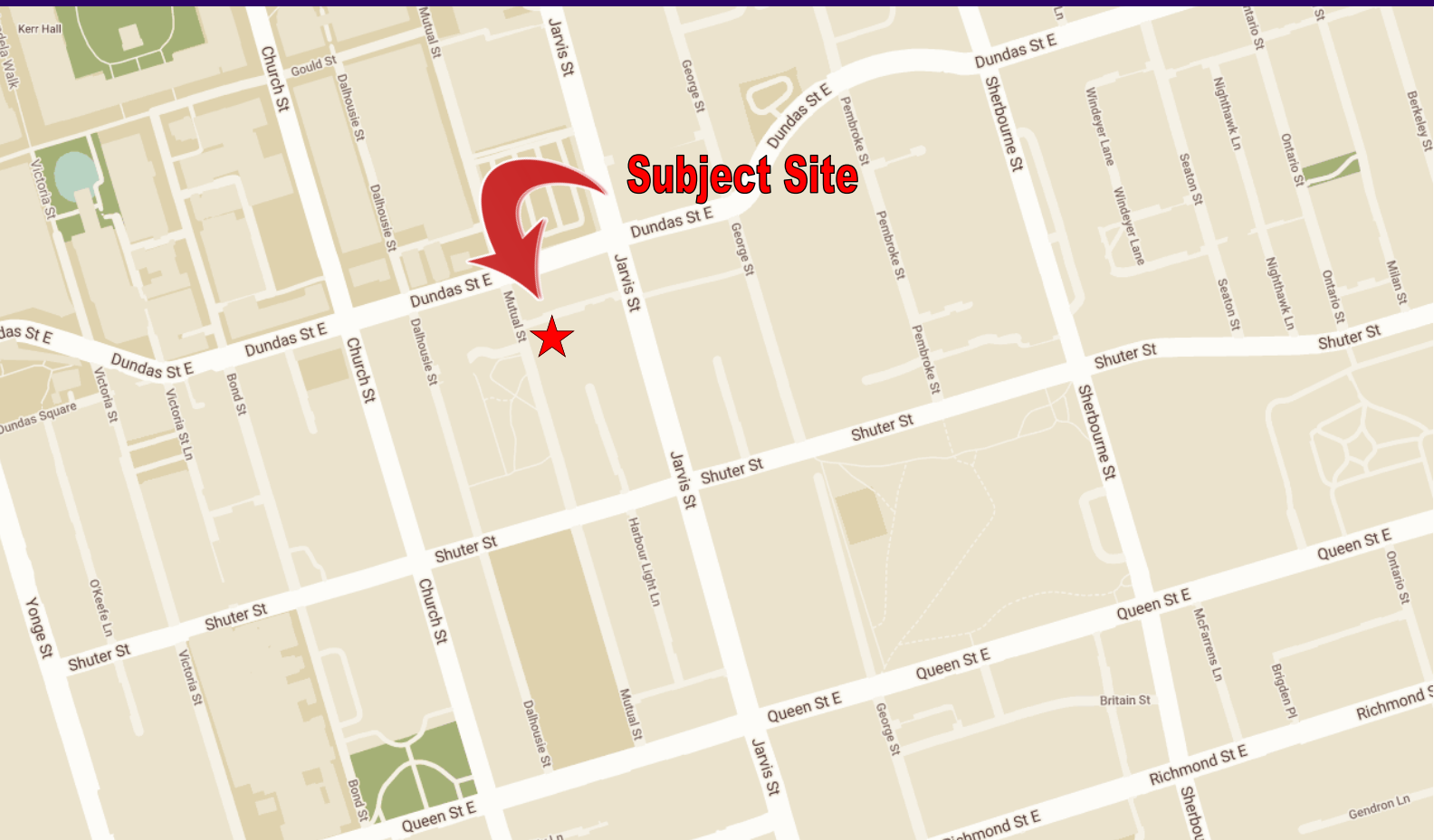


RETAIL B
1,643 SQ. FT.



81 & 87 MUTUAL STREET, TORONTO

PRIME RETAIL FOR LEASE



Demographics - 2016	.5 km	1 km	2 km
Total Population	12,392	56,185	173,518
Daytime Population	35,139	226,295	641,110
Total Households	6,689	32,126	99,492
Household Average Income	\$63,224	\$78,196	\$85,647

Source: Statistics Canada

All information is from sources deemed reliable and is subject to errors and omissions which we believe to be correct and assume no responsibility. Changes of price, rental, prior sale and withdrawal without notice. People are not to construe this information as legal or tax advice. You should consult your legal counsel, accountant, or other advisors on matters relating to this presentation. The Behar Group Realty Inc., Brokerage.

