

235 STARWOOD DRIVE, #5, GUELPH

RETAIL/COMMERCIAL SPACE FOR LEASE



1,299 SQUARE FEET

Located at the northeast corner of Starwood Drive and Grange Road

INQUIRIES

Matthew Goldman

Director, Commercial Sales & Leasing
Sales Representative
416 636 8898 x225
mgoldsm@thebehargroup.com

Jeanine McLaughlin

Broker
416 636 8898 x238
jmclaughlin@thebehargroup.com



235 STARWOOD DRIVE, #5, GUELPH

RETAIL/COMMERCIAL SPACE FOR LEASE

PROPERTY DETAILS

Size: 1,299 square feet

Net Rent: \$22.00 per square foot

TMI: \$10.29 per square foot (est.)

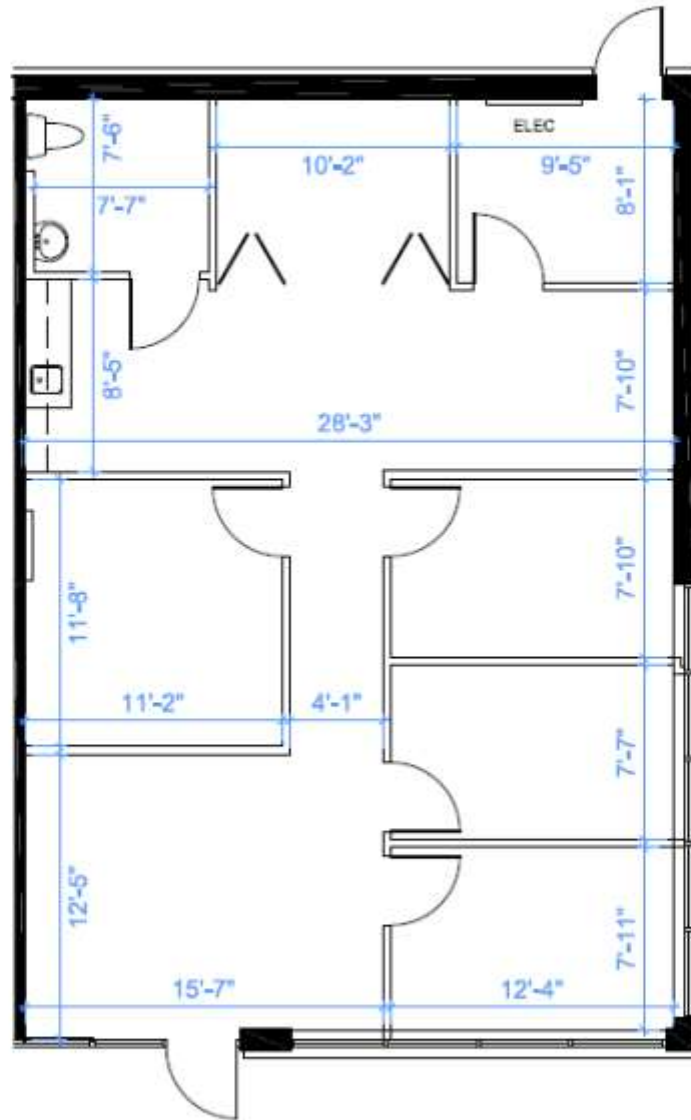
Occupancy: Immediate

- Half of a pad opportunity in a growing neighborhood plaza
- Located at the northeast corner of Starwood Drive and Grange Road
- Steps to public transit
- Prominent signage opportunity
- Ideal for a variety of retail/commercial/services uses, including medical and financial



235 STARWOOD DRIVE, #5, GUELPH

RETAIL/COMMERCIAL SPACE FOR LEASE



RENTABLE AREA = 1,299 S.F.

ABOVE INFORMATION ESTABLISHED ACCORDING TO
THE BOMA/SIOR INDUSTRIAL STANDARD
ANSI / BOMA Z85.2 2012 - METHOD A

prepared by



SPACE DATABASE™
www.spacedatabase.com

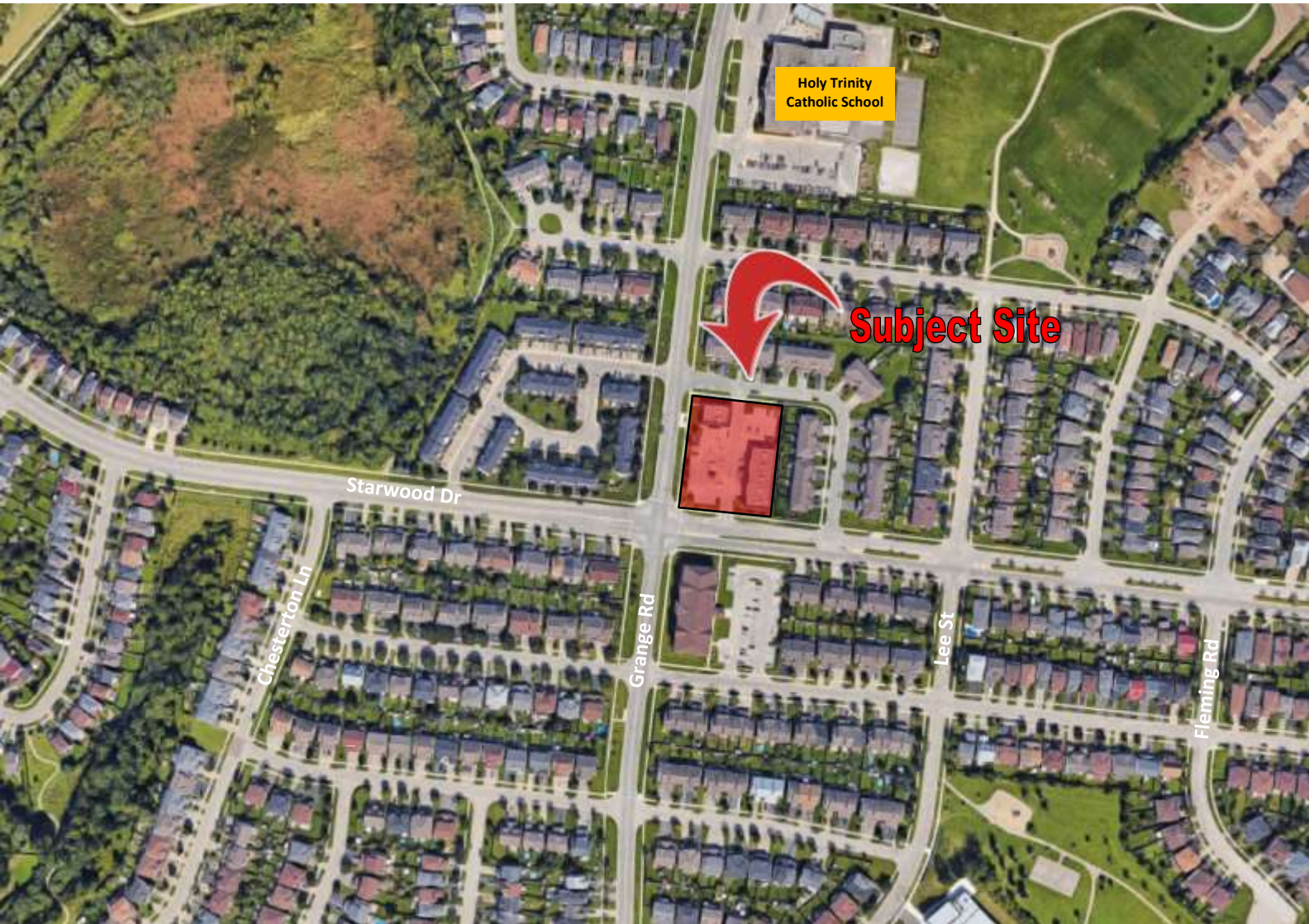


0 5 15 FT.

 THE BEHAR GROUP
LANDLORD SERVICES

235 STARWOOD DRIVE, #5, GUELPH

RETAIL/COMMERCIAL SPACE FOR LEASE



<i>Demographics - 2017 Estimate</i>	<i>1 km</i>	<i>3 km</i>	<i>5 km</i>
Total Population	10,109	31,731	68,302
Daytime Population	6,660	27,870	87,285
Total Households	3,590	12,662	29,656
Household Average Income	\$110,930	\$96,054	\$93,324

Source: Environics Analytics © 2017

All information is from sources deemed reliable and is subject to errors and omissions which we believe to be correct and assume no responsibility. Changes of price, rental, prior sale and withdrawal without notice. People are not to construe this information as legal or tax advice. You should consult your legal counsel, accountant, or other advisors on matters relating to this presentation. The Behar Group Realty Inc., Brokerage.

