

# 4352 & 4366 KINGSTON RD. TORONTO

Retail/Commercial Space

# FOR LEASE



- Located on Kingston Road just south of Lawrence Avenue East
- Great frontage facing Kingston Road
- Signalized intersection
- Easy access and ample parking
- Ideal for retail, professional, service, food
- **Possession:** Immediate
- **Availabilities**
  - Freestanding building - 2,516 square feet
  - In-line unit - 321 square feet
- **Net Rent:**
  - Freestanding building - \$24.50 per square foot
  - In-line unit - \$11.60 per square foot
- **TMI:** \$11.90 per square foot



For more information, please contact:

**416.636.8898**

**Justin Pearlstein (x250)**

Sales Representative

[jpearlstein@thebehargroup.com](mailto:jpearlstein@thebehargroup.com)

**Greg Evans (x230)**

Executive Vice President, Broker

[gevans@thebehargroup.com](mailto:gevans@thebehargroup.com)

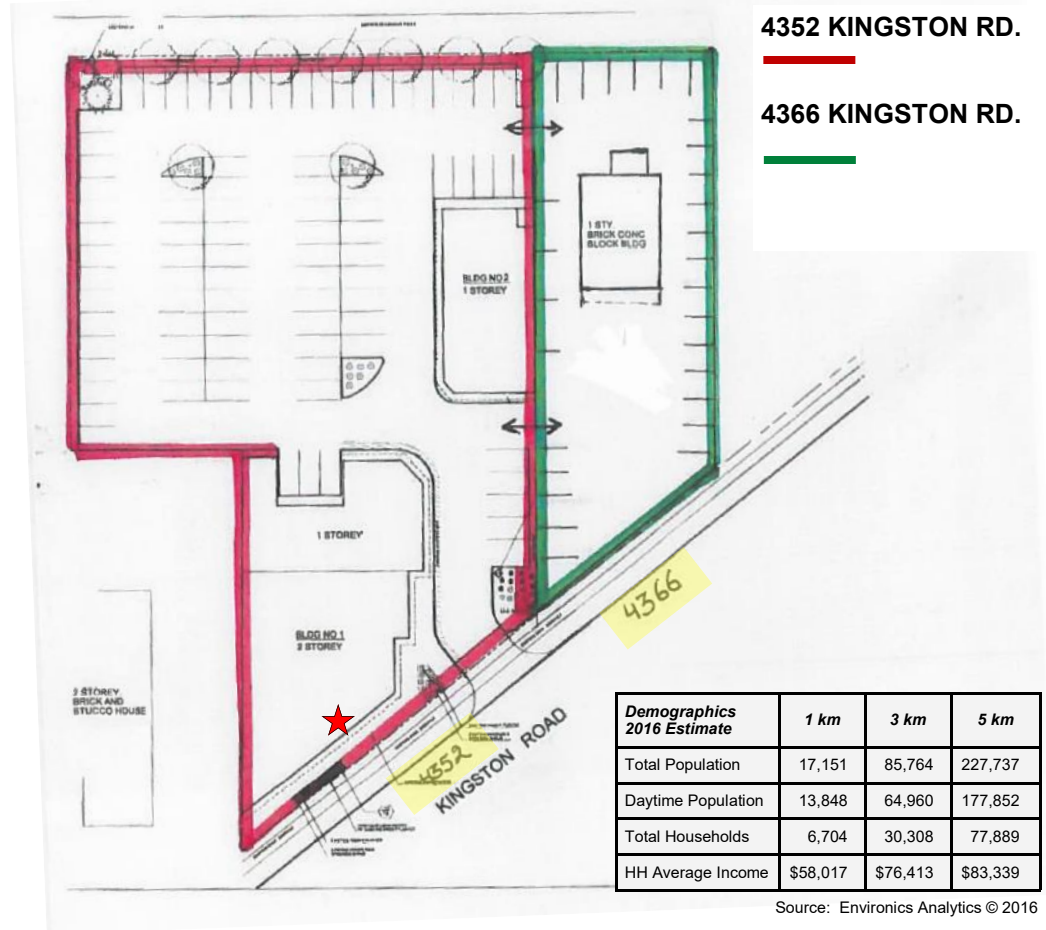
The Behar Group Realty Inc., Brokerage  
1170 Sheppard Avenue West, Unit 24, Toronto, Ontario M3K 2A3 / Tel: 416.636.8898 / Fax: 416.636.8890 / Website: [www.thebehargroup.com](http://www.thebehargroup.com)

All information is from sources deemed reliable and is subject to errors and omissions which we believe to be correct and assume no responsibility. Changes of price, rental, prior sale and withdrawal without notice. People are not to construe this information as legal or tax advice. You should consult your legal counsel, accountant, or other advisors on matters relating to this presentation. The Behar Group Realty Inc., Brokerage.

# 4352 & 4366 KINGSTON RD. TORONTO

Retail/Commercial Space

# FOR LEASE



For more information, please contact:

**416.636.8898**

**Justin Pearlstein (x250)**  
Sales Representative  
[jpearlstein@thebehargroup.com](mailto:jpearlstein@thebehargroup.com)

**Greg Evans (x230)**  
Executive Vice President, Broker  
[gevans@thebehargroup.com](mailto:gevans@thebehargroup.com)

