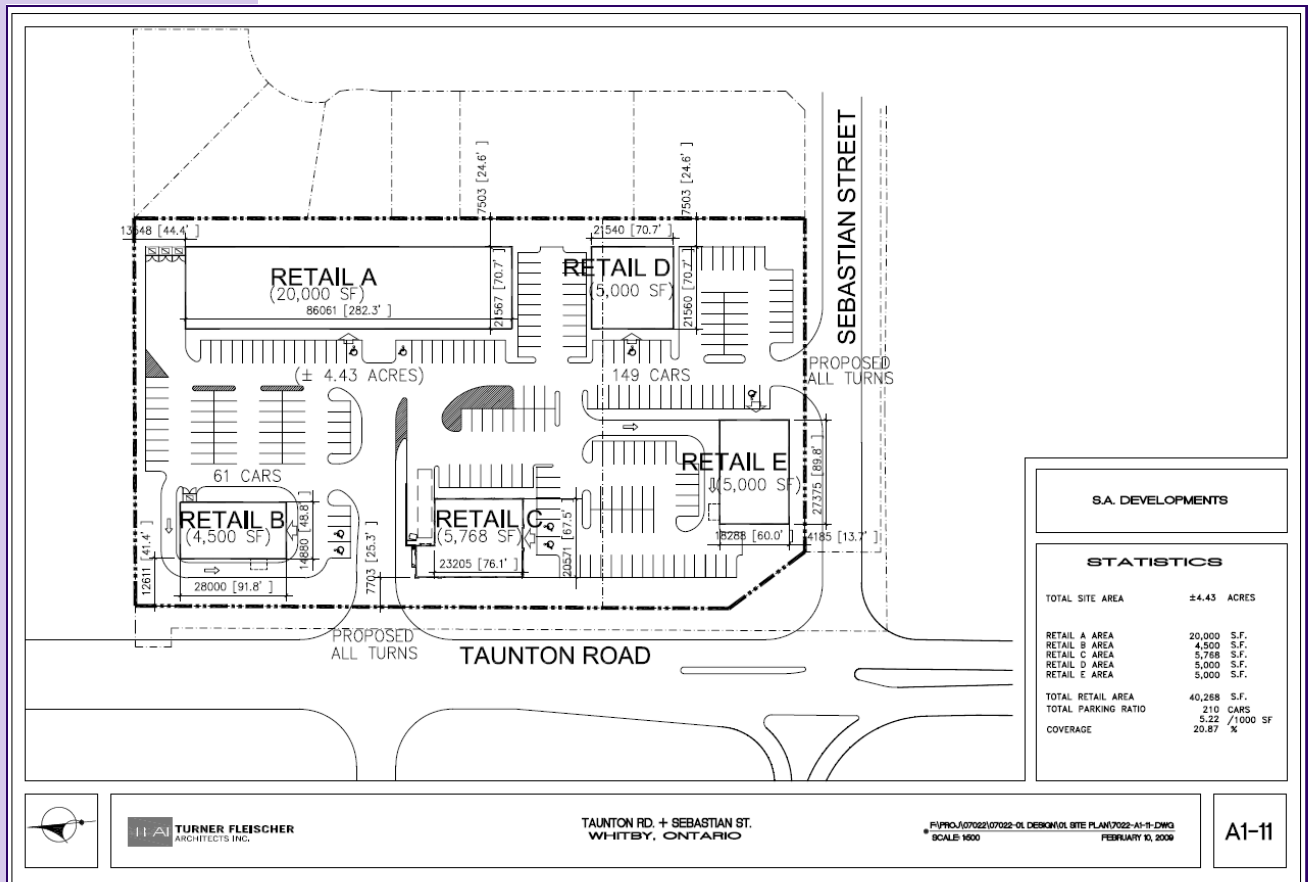


TAUNTON ROAD EAST & SEBASTIAN STREET WHITBY

Prime Retail Space

FOR LEASE



THE BEHAR GROUP

For more information, please contact:

416.636.8898

Greg Evans (x230)
Executive Vice President, Broker
gevans@thebehargroup.com

- Prime retail and restaurant space opportunities
- Located at the southeast corner of Taunton Road East and Sebastian Street
- Up to 20,000 square feet
- Net Rents: TBD
- Additional Rents: TBD
- Possession: TBD

TAUNTON ROAD EAST & SEBASTIAN STREET WHITBY

Prime Retail Space

FOR LEASE



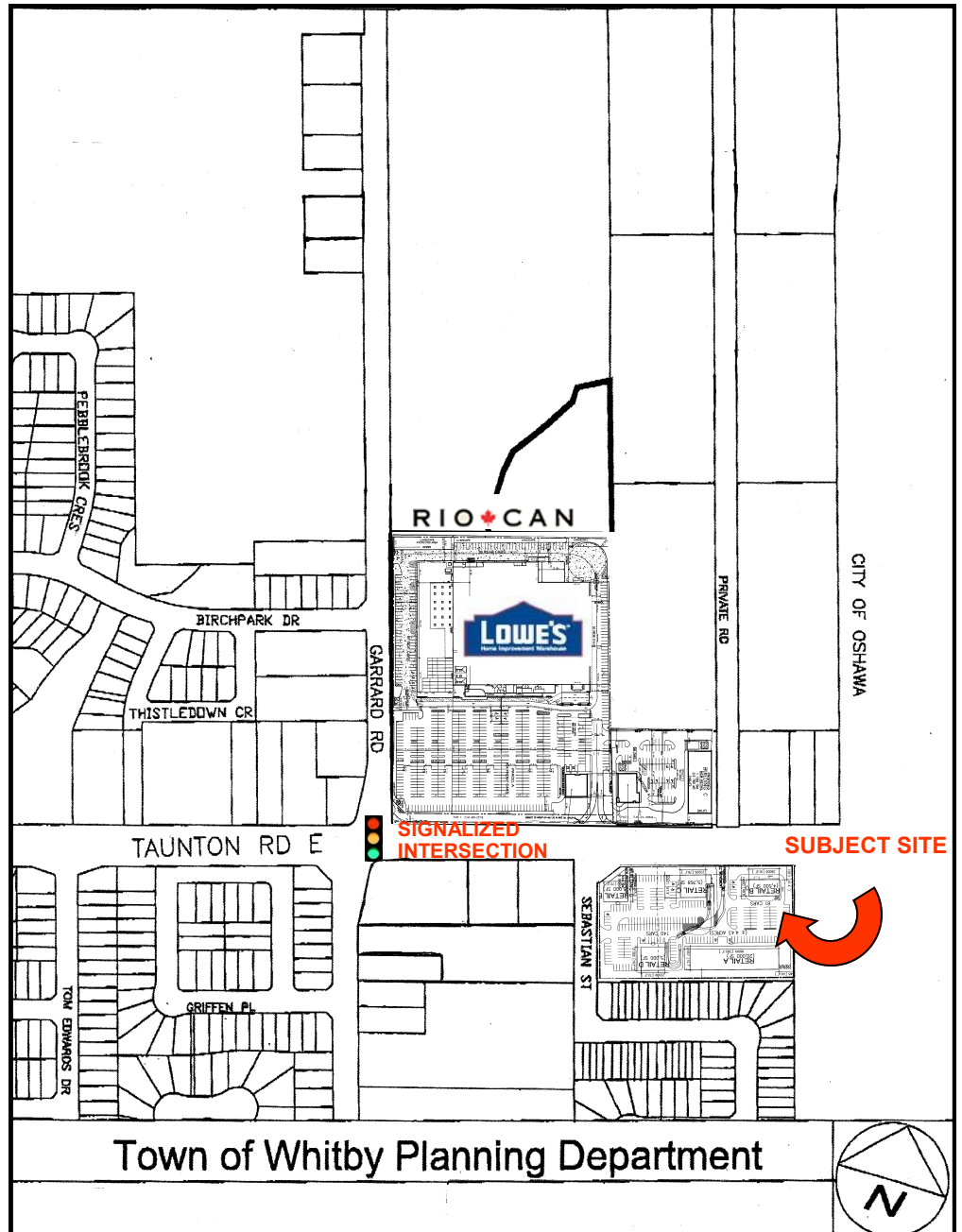
THE BEHAR GROUP

For more information, please contact:

416.636.8898

Greg Evans (x230)

Executive Vice President, Broker
gevans@thebehargroup.com



Town of Whitby Planning Department



The Behar Group Realty Inc., Brokerage
1170 Sheppard Avenue West, Unit 24, Toronto, Ontario M3K 2A3 / Tel: 416.636.8898 / Fax: 416.636.8890 / Website: www.thebehargroup.com

All information is from sources deemed reliable and is subject to errors and omissions which we believe to be correct and assume no responsibility. Changes of price, rental, prior sale and withdrawal without notice. People are not to construe this information as legal or tax advice. You should consult your legal counsel, accountant, or other advisors on matters relating to this presentation. The Behar Group Realty Inc., Brokerage.