

9688 LESLIE STREET, UNITS 9-11
RICHMOND HILL
Prime Retail Space

FOR LEASE



- Located on the southwest corner of Leslie St. and Greenhill Ave.
- Exposure to Leslie Street
- Lots of new development in the area
- Suitable for retail, service commercial, medical, etc.
- **Possession:** Immediate
- **Size:** 3,190 square feet
- **Net Rent:** \$20.00 per square foot
- **TMI:** \$9.00 per square foot

For more information, please contact:

Igor Chouminov

Broker

416.636.8898 ext. 226

416.636.8890 fax

igor@thebehargroup.com

Adam Scale

Sales Representative

416.636.8898 ext. 249

416.636.8890 fax

ascale@thebehargroup.com

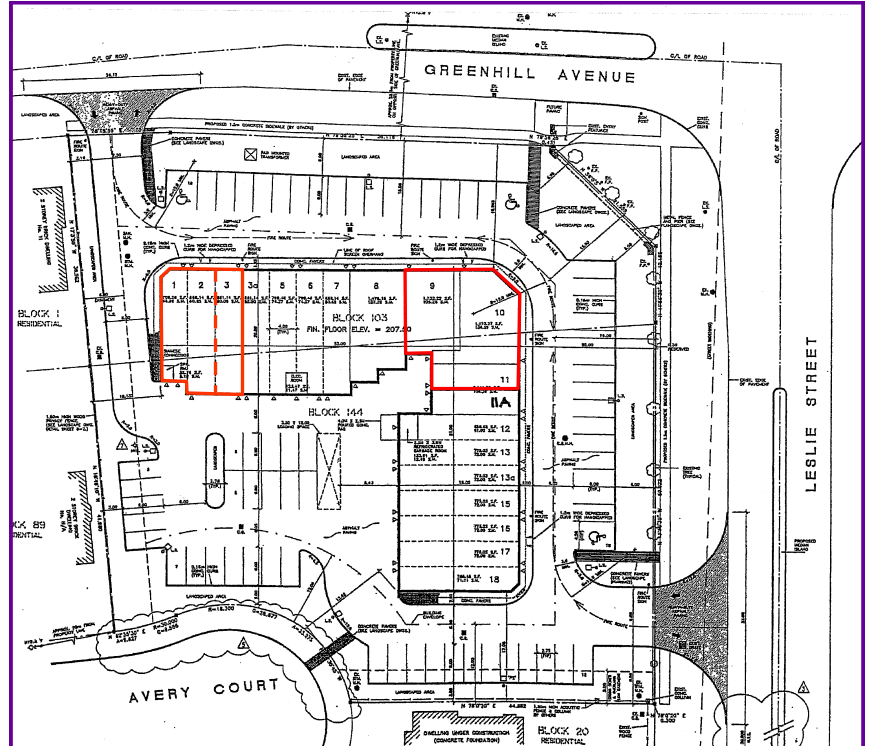


The Behar Group Realty Inc., Brokerage
1170 Sheppard Avenue West, Unit 24, Toronto, Ontario M3K 2A3 / Tel: 416.636.8898 / Fax: 416.636.8890 / Website: www.thebehargroup.com

All information is from sources deemed reliable and is subject to errors and omissions which we believe to be correct and assume no responsibility. Changes of price, rental, prior sale and withdrawal without notice. People are not to construe this information as legal or tax advice. You should consult your legal counsel, accountant, or other advisors on matters relating to this presentation. The Behar Group Realty Inc., Brokerage.

9688 LESLIE STREET, UNITS 9-11 RICHMOND HILL Prime Retail Space

FOR LEASE



Other Tenants:

Japanese Restaurant
Chiropractic Clinic
Learning Centre
....and more

For more information, please contact:

Igor Chouminov
Broker
416.636.8898 ext. 226
416.636.8890 fax
igor@thebehargroup.com

Adam Scale
Sales Representative
416.636.8898 ext. 249
416.636.8890 fax
ascale@thebehargroup.com

