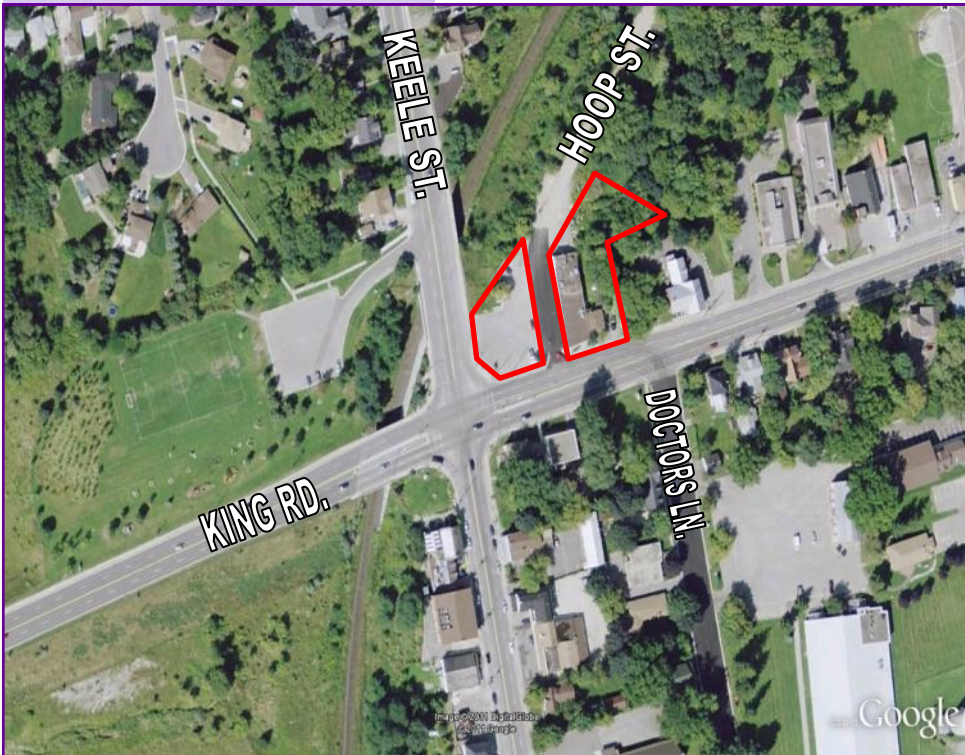


2240 KING ROAD KING CITY Retail Space

FOR LEASE



- New development opportunity located at the NE corner of King Road and Keele Street in affluent King City
- Ideal for banks, service retail and restaurant
- Possession: TBD
- Net Rent: TBD
- TMI: TBD
- King Road is a major travel corridor to and from Hwy. 400, as well as the King City Go Station
- Average daily traffic flow of approximately 25,000 (2008)
- Numerous new residential developments have been approved

For more information, please contact:

Greg Evans

Vice-President, Broker
416.636.8898 ext. 230
gevans@thebehargroup.com

Paul Ceresne

Sales Representative
416.636.8898 ext. 246
pceresne@thebehargroup.com

Lily Masters

Sales Representative
416.636.8898 ext. 239
lmasters@thebehargroup.com

