

9821 LESLIE STREET
RICHMOND HILL
Prime Location

FOR LEASE



For more information, please contact:

Igor Chouminov
Broker
416.636.8898 ext. 226
416.636.8890 fax
416.877.0326 cell
igor@thebehargroup.com

- Located south of Major Mackenzie Drive and north of Sixteenth Avenue
- 15,514.26 square feet (divisible)
- Lot area: 1.06 acres
- Total parking spaces: 42
- Possession: Immediate
- Net Rent:
 - Units 101, 102: \$15.00 psf net
 - Unit 103: \$17.00 psf net
 - Units 104, 106 & 107: \$12.00 psf net
 - Second floor (Unit 201): \$10.00 psf net
- Estimated TMI: \$8.00 psf
- Utilities: Separate meters



The Behar Group Realty Inc., Brokerage
1170 Sheppard Avenue West, Unit 24, Toronto, Ontario M3K 2A3 / Tel: 416.636.8898 / Fax: 416.636.8890 / Website: www.thebehargroup.com

All information is from sources deemed reliable and is subject to errors and omissions which we believe to be correct and assume no responsibility. Changes of price, rental, prior sale and withdrawal without notice. People are not to construe this information as legal or tax advice. You should consult your legal counsel, accountant, or other advisors on matters relating to this presentation. The Behar Group Realty Inc., Brokerage.

9821 LESLIE STREET RICHMOND HILL Prime Location

FOR LEASE

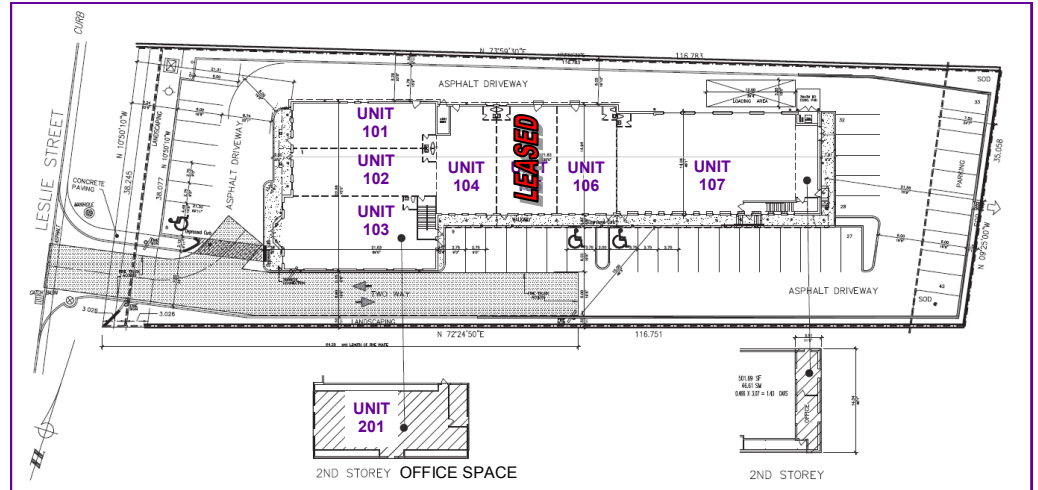
High Performance Commercial Historical (MC-1(HIS)) ZONE

Uses Permitted:

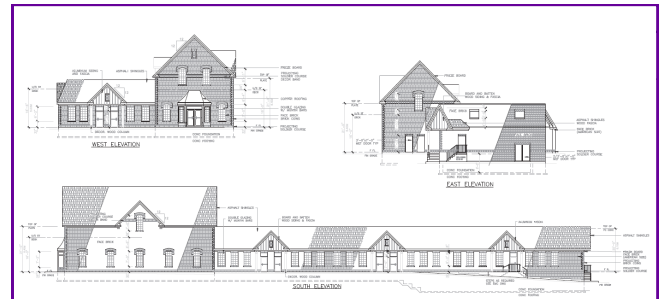
- Banks and financial institutions
- Technical and commercial schools
- Business and professional offices
- Printing establishments
- Research and development

Additional Uses:

- Computer Software Development and Sales
- Travel Agency
- Specialty Furniture
- Art Galleries
- Artist's Studio
- Antique Stores
- Clothing Boutiques
- Home Decorating Boutique
- Specialty Food Stores, not Convenience Food Stores
- Personal Service Shops
- Pharmacies



Unit #	Size (sf)
101	1,419
102	1,419
103	2,232
104	1,247
106	1,360
107	4,265
201	2,046



For more information, please contact:

Igor Chouminov
Broker
416.636.8898 ext. 226
416.636.8890 fax
416.877.0326 cell
igor@thebehargroup.com

