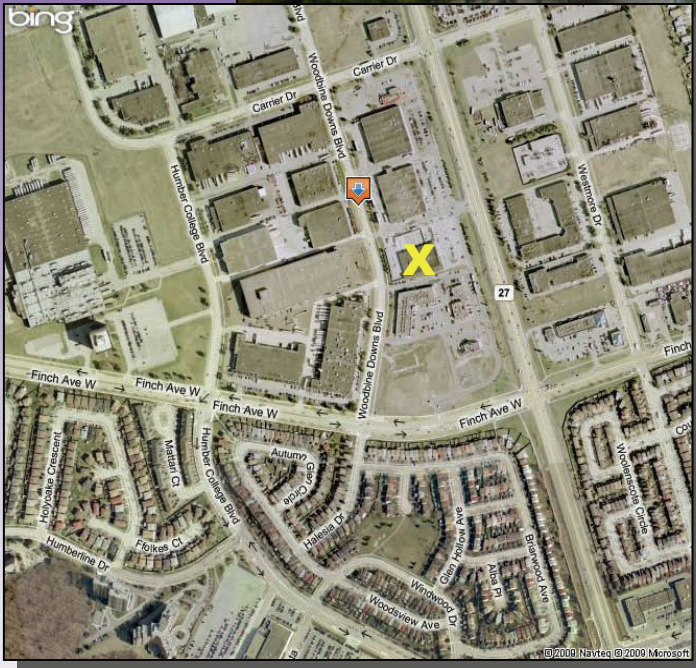


Click here to
enlarge panorama

Note: ability to view
and scroll image is
dependent on your
image viewing
application



35 Woodbine Downs Blvd, Etobicoke M9W 6N5

- * **Type:** Sublease
- * **Size:** 13,530 sq ft
- * **Base rent:** \$13.00/sq ft
- * **Additional rent:** \$6.00/sq ft
- * **Sublease expires:** October 28, 2010
- * **Possession:** 60 days
- * **Located:** Frontage and plaza entrance face Hwy 27, about a city block north of Finch



Please contact:

SARI SAMARAH
Sales Representative
M: (416) 508-0459
ssamarah@thebehargroup.com

CHRISTOPHER SEEPE
Sales Representative
Director of R&D
M: (416) 525-1558
cseepe@thebehargroup.com

