

318 MEMORIAL AVENUE ORILLIA Prime Retail Space

FOR SALE OR LEASE



For more information, please contact:

Michael J. Saperia

Broker

416.636.8898 ext. 229

416.636.8890 fax

416.804.9162 cell

msaperia@thebehargroup.com

- Located on the east side of Memorial, just north of Hwy. #12.
- Adjacent to a McDonald's Restaurant to the south and a vacant Esso Station to the north which has just recently been SOLD!
- This strip of Memorial Avenue currently boasts these fine brands, including Harvey's/Swiss Chalet, Tim Horton's, A&W, Pizza Hut, Burger King, Quizno's, Subway, Eastside Mario's, Dollarama, Money Mart & Roger's Video.
- The site is just under an acre, with a proposed 6,950 sq. ft. commercial/retail building with ample parking.
- Just minutes from Casino Rama.
- Total population: 30,259
- Total households: 12,652
- Asking Price: \$975,000.00
- Net Rent: \$28.00 per square foot
- TMI—T.B.A.



The Behar Group Realty Inc., Brokerage

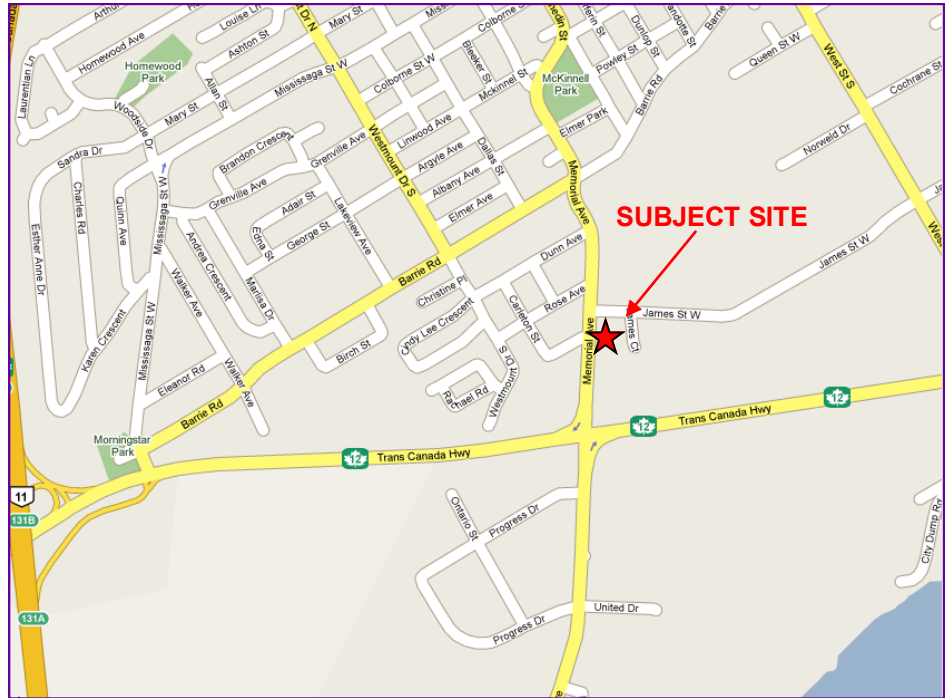
1170 Sheppard Ave. W., Unit 24, Toronto, ON M3K 2A3

Tel: 416.636.8898 Fax: 416.636.8890

Website: www.thebehargroup.com

318 MEMORIAL AVENUE ORILLIA Prime Retail Space

FOR SALE OR LEASE



For more information, please contact:

Michael J. Saperia

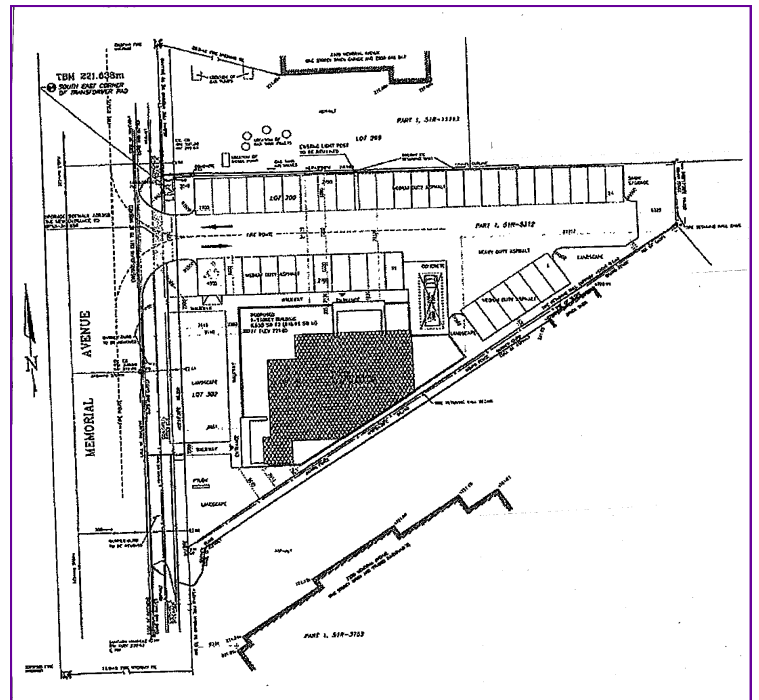
Broker

416.636.8898 ext. 229

416.636.8890 fax

416.804.9162 cell

msaperia@thebehargroup.com



The Behar Group Realty Inc., Brokerage

1170 Sheppard Ave. W., Unit 24, Toronto, ON M3K 2A3

Tel: 416.636.8898

Fax: 416.636.8890

Website: www.thebehargroup.com