

# 2614 YONGE STREET TORONTO

Prime Retail Space

# FOR LEASE



For more information, please contact:

**Sari Samarah**

Sales Representative

**416.636.8898 ext. 231**

**416.636.8890 fax**

[sari@thebehargroup.com](mailto:sari@thebehargroup.com)

**Lily Masters**

Sales Representative

**416.636.8898 ext. 239**

**416.636.8890 fax**

[lmasters@thebehargroup.com](mailto:lmasters@thebehargroup.com)

- Located on Yonge Street between Lawrence Avenue and Eglinton Avenue
- Adjacent to Club Monaco, across from The Gap and in close proximity to Sporting Life, Lu Lu Lemon, Starbucks, Timothy's, etc.
- No heavy food uses allowed
- Possession: Immediate
- 724 square feet on main floor with a finished basement of 782 square feet
- Net Rent: \$75.00 per square foot
- TMI: \$16.00 per square foot



The Behar Group Realty Inc., Brokerage

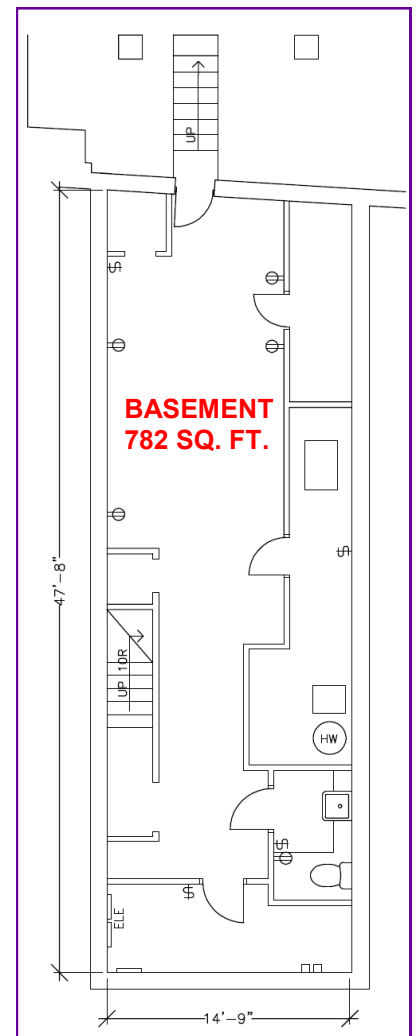
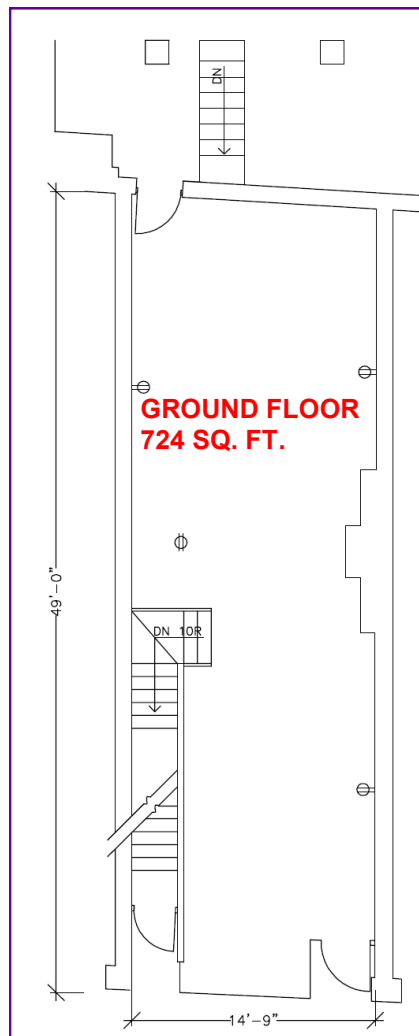
1170 Sheppard Avenue West, Unit 24, Toronto, Ontario M3K 2A3 / Tel: 416.636.8898 / Fax: 416.636.8890 / Website: [www.thebehargroup.com](http://www.thebehargroup.com)

All information is from sources deemed reliable and is subject to errors and omissions which we believe to be correct and assume no responsibility. Changes of price, rental, prior sale and withdrawal without notice. People are not to construe this information as legal or tax advice. You should consult your legal counsel, accountant, or other advisors on matters relating to this presentation. The Behar Group Realty Inc., Brokerage.

# 2614 YONGE STREET TORONTO

Prime Retail Space

# FOR LEASE



For more information, please contact:

**Sari Samarah**  
Sales Representative  
**416.636.8898 ext. 231**  
**416.636.8890 fax**  
[sari@thebehargroup.com](mailto:sari@thebehargroup.com)

**Lily Masters**  
Sales Representative  
**416.636.8898 ext. 239**  
**416.636.8890 fax**  
[lmasters@thebehargroup.com](mailto:lmasters@thebehargroup.com)

