

# 2291 KIPLING AVENUE ETOBICOKE Retail Space

## FOR LEASE



Kipling Heights Centre



- 5,200 square feet
- Located at the northeast corner of Kipling Avenue and Brookmere Road
- Established middle income residential neighbourhood
- High visibility on signalized corner on major arterial road
- Plaza profile anchor opportunity
- Ample parking
- Possession: Immediate
- Rent: \$22.00 net per square foot
- Additional Rent: \$9.38 per square foot

Please contact:

**CHRISTOPHER SEEPE**

Sales Representative

Director of R&D

M: (416) 525-1558

O: (416) 636-8898 ext. 224

[cseepe@thebehargroup.com](mailto:cseepe@thebehargroup.com)



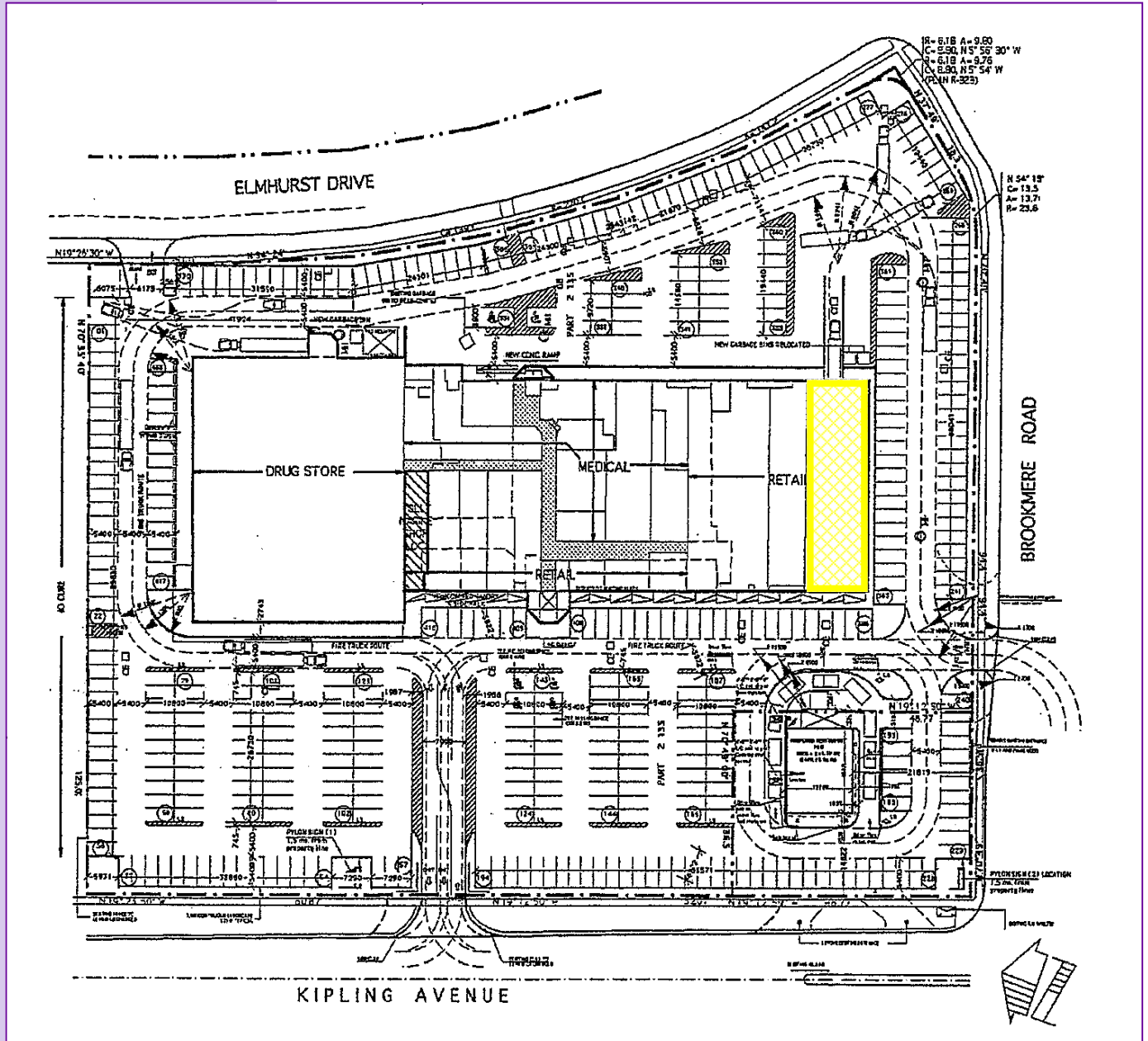
The Behar Group Realty Inc., Brokerage

1170 Sheppard Avenue West, Unit 24, Toronto, Ontario M3K 2A3 / Tel: 416.636.8898 / Fax: 416.636.8890 / Website: [www.thebehargroup.com](http://www.thebehargroup.com)

All information is from sources deemed reliable and is subject to errors and omissions which we believe to be correct and assume no responsibility. Changes of price, rental, prior sale and withdrawal without notice. People are not to construe this information as legal or tax advice. You should consult your legal counsel, accountant, or other advisors on matters relating to this presentation. The Behar Group Realty Inc., Brokerage.

# 2291 KIPLING AVENUE ETOBICOKE Retail Space

# SITE PLAN



Please contact:

**CHRISTOPHER SEEPE**

Sales Representative

Director of R&D

M: (416) 525-1558

O: (416) 636-8898 ext. 224

[cseepe@thebehargroup.com](mailto:cseepe@thebehargroup.com)



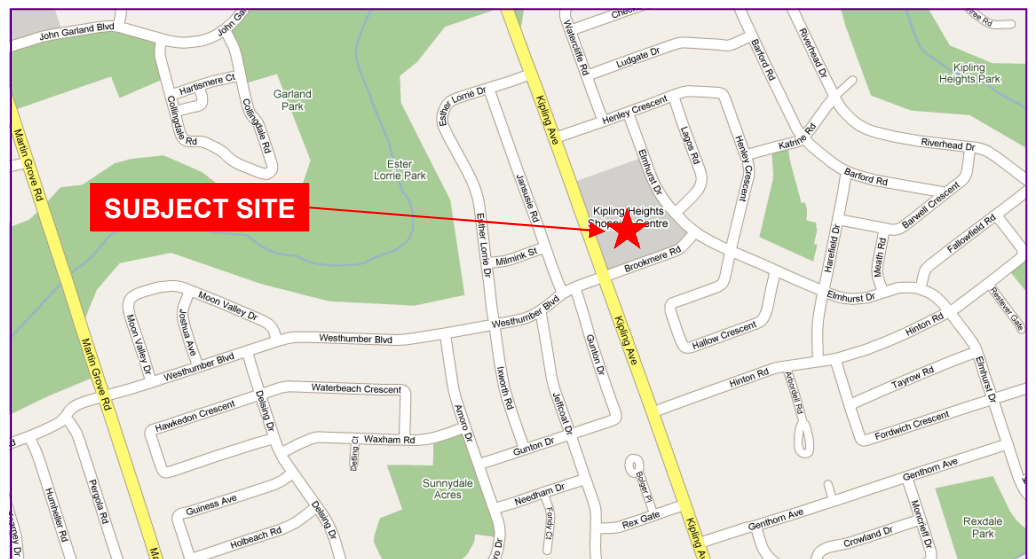
The Behar Group Realty Inc., Brokerage

1170 Sheppard Avenue West, Unit 24, Toronto, Ontario M3K 2A3 / Tel: 416.636.8898 / Fax: 416.636.8890 / Website: [www.thebehargroup.com](http://www.thebehargroup.com)

All information is from sources deemed reliable and is subject to errors and omissions which we believe to be correct and assume no responsibility. Changes of price, rental, prior sale and withdrawal without notice. People are not to construe this information as legal or tax advice. You should consult your legal counsel, accountant, or other advisors on matters relating to this presentation. The Behar Group Realty Inc., Brokerage.

# 2291 KIPLING AVENUE ETOBICOKE Retail Space

# AERIAL & MAP



Please contact:

**CHRISTOPHER SEEPE**

Sales Representative

Director of R&D

M: (416) 525-1558

O: (416) 636-8898 ext. 224

[cseepe@thebehargroup.com](mailto:cseepe@thebehargroup.com)



The Behar Group Realty Inc., Brokerage

1170 Sheppard Avenue West, Unit 24, Toronto, Ontario M3K 2A3 / Tel: 416.636.8898 / Fax: 416.636.8890 / Website: [www.thebehargroup.com](http://www.thebehargroup.com)

All information is from sources deemed reliable and is subject to errors and omissions which we believe to be correct and assume no responsibility. Changes of price, rental, prior sale and withdrawal without notice. People are not to construe this information as legal or tax advice. You should consult your legal counsel, accountant, or other advisors on matters relating to this presentation. The Behar Group Realty Inc., Brokerage.